

# theben

309699

**EN** Motion detector

theLuxa S360 WH 1010510

theLuxa S360 BK 1010511



## 1. Essential safety instructions



**WARNING**

**Danger of death through electric shock or fire!**

- Installation should only be carried out by a professional electrician!

- The device conforms with EN 60669-2-1 when correctly installed
- IP 55 in accordance with EN 60529

### Designated use

- Motion detector for automatic lighting control dependent on presence and brightness
- Suitable for installation on external walls or ceilings
- Suitable for entrances, garages, gardens, corridors, parks, etc.
- Only intended for installation outside of arm's reach

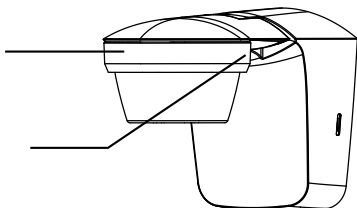
## Disposal

Dispose of the motion detector in an environmentally sound manner (electronic waste)

## 2. Description

Motion detector with sensor head

3 potentiometers for setting time (min) and brightness (lux) and sensitivity (Meter)

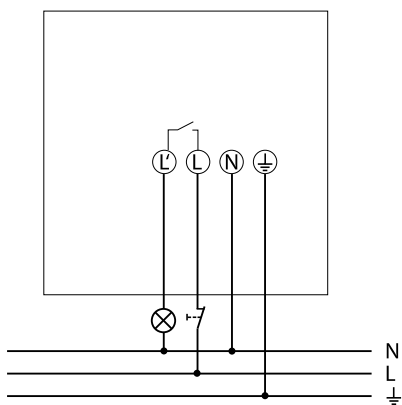
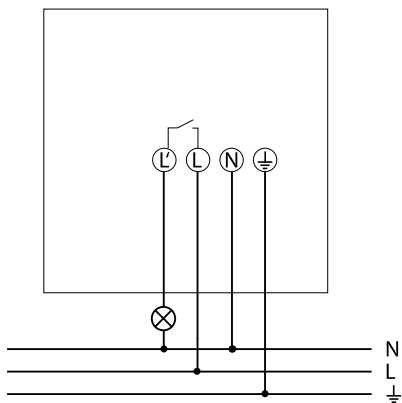


## 3. Connection

### WARNING

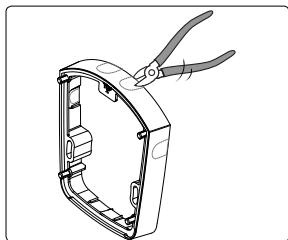
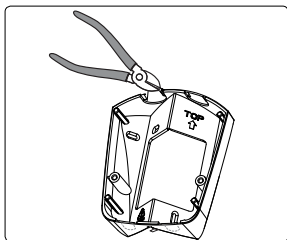
**Danger of death through electric shock!**

- Disconnect power source!
- Cover or shield any adjacent live components.
- Ensure device cannot be switched on again!
- Check power supply is disconnected!
- Earth and bypass!

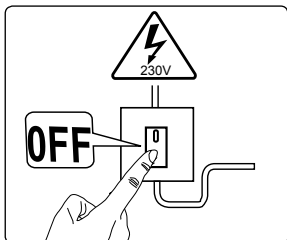


The device can be manually activated with a circuit breaker. After releasing the button (return of power) the device switches on (for at least 40 secs or for the time set on the device).

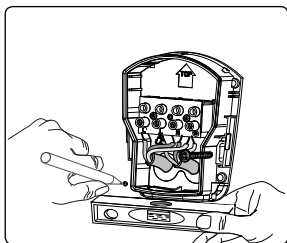
## 4. Installation



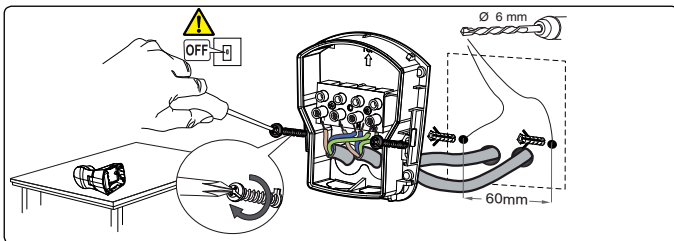
- ▶ If applicable, use optional corner bracket (9070902, 9070903) or optional spacer frame (9070906, 9070907) for flexible installation as well as cable insertion from side or top/bottom.



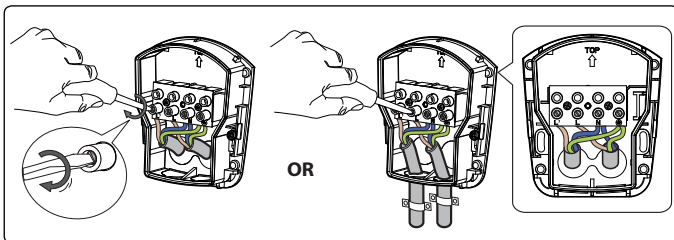
- ▶ Disconnect power source.



- Make marks for the holes on the wall (with en-closed drill template/base).
- Drill holes.



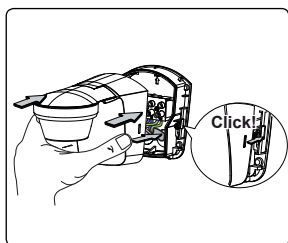
- Feed cable through the seal of the base.
- Fasten base (and spacer frame) to the wall.



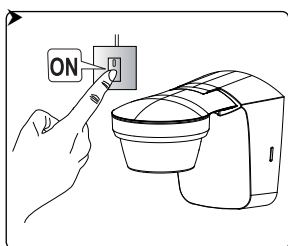
L	Phase	brown
N	Neutral conductor	blue
⊕	Earthing conductor	

L'	Switched phase	brown
N	Neutral conductor	blue
⊕	Earthing conductor	green/yellow

- Connect the individual wires to the appropriate terminal.
- Tighten screws.

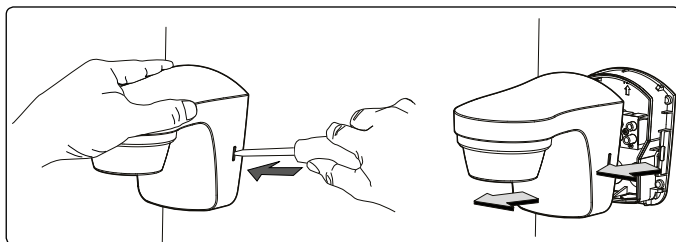


- Plug motion detector into base and click in.



- Connect motion detector to power supply.

## Dismantling

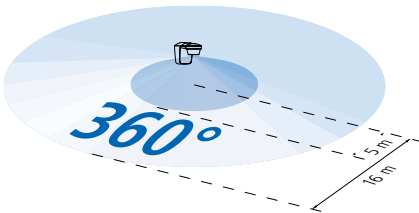
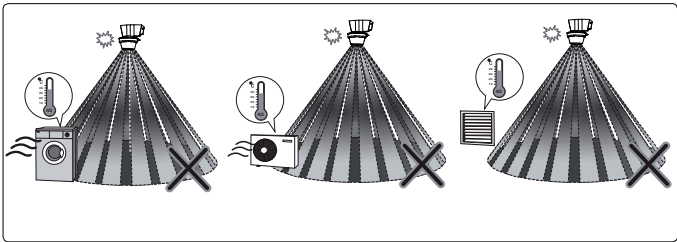


- Using the screwdriver, carefully loosen the snap-in hook at the side and pull the device forward.

## Installation instructions

As the detector reacts to variations in temperature, avoid the following situations:

- ▶ Do not direct motion detectors at objects with highly reflective surfaces such as mirrors etc.
- ▶ Do not install motion detectors near heat sources such as heating outlets, air conditioning systems, lamps etc.
- ▶ Do not direct the motion detector at objects that turn in the wind such as curtains, large plants etc.
- ▶ Take account of motion direction during test run.



- Recommended installation height: 2 – 4 m
- Crosswise detection area: 16 m (crosswise to the detector)
- Frontal detection area: 5 m (in front of the detector)
- Detection angle: 360°

## 5. Direction test and alignment

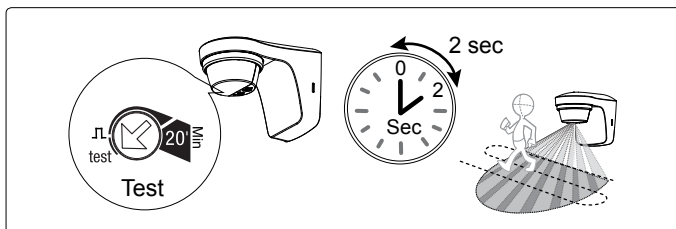
The walk test is used to test the detection range and to restrict it if necessary.

- Set the potentiometer time (min) to test.

The motion detector now only reacts to movement (independent of brightness).

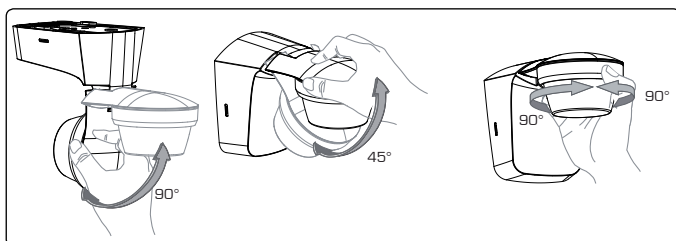
- Crosswise to the detection area. After the motion detector has detected a movement, it switches on for 2 s.

Note direction of motion during the test.



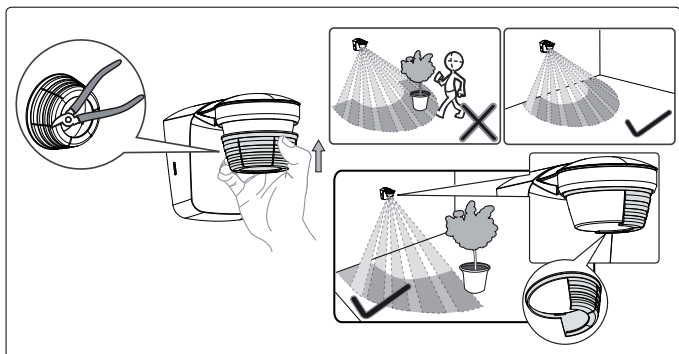
### Align motion detector with sensor head

The sensor head can be turned by 45° downwards and 90° upwards and by 90° to the left and right.





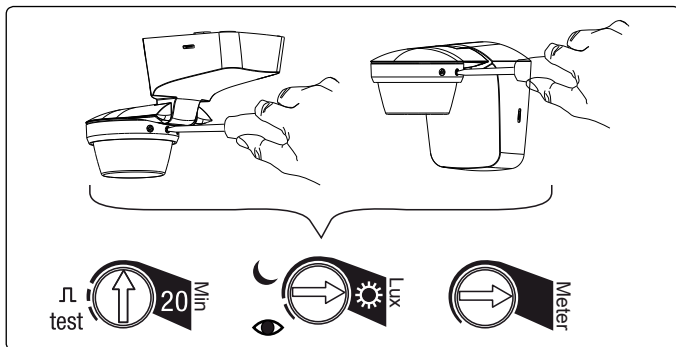
## 6. Use screens



- ▶ Use supplied screen to adjust the motion detector to desired detection area.
- ▶ Remove the required section from the screen using pliers.
- ▶ Then place on the lens and screw in.

## 7. Setting

The motion detector has 3 potentiometers underneath for setting the time (Min), brightness (Lux) and sensitivity (Meter).

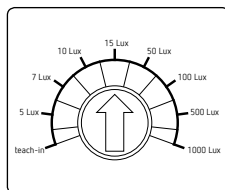
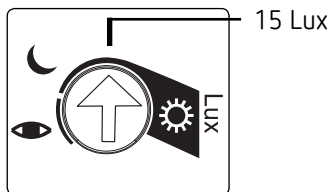


## Set brightness (lux)


You can set different brightness values (lux) with the potentiometer.

If you want to change the preset brightness (15 lux default)

- Set potentiometer to desired brightness (5 – 1000 lux).



or want a specific brightness value to be learned using the teach-in function

- At the desired brightness set the potentiometer to . The value will be learned after 15 s.

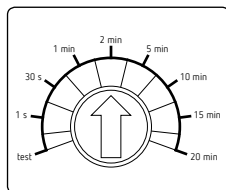
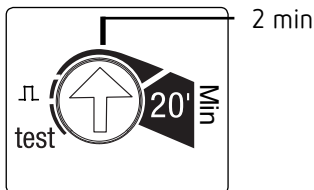
- ▶ Leave potentiometer at position  .

## Set time (min)

If the motion detector detects no further movement, it switches off after the set time.

If you want to change the preset time (2 min default)

- ▶ Set potentiometer to desired time (1 s – 20 min).



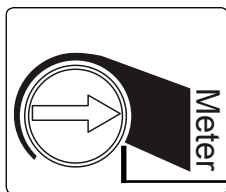
If you want to use the pulse function (e.g. for a staircase light time switch)

- ▶ Set potentiometer to position  $\Pi$  . The motion detector is switched on for < 1 s, then off for 9 s. If it detects a movement again, it switches on again for 1 s.

## Set sensitivity (Meter)

You can reduce the sensitivity; this also reduces the detection range.

- ▶ Set Potentiometer **Meter** to the desired sensitivity.



Max. sensitivity

## 8. Technical data

- Operating voltage: 230 V AC, +10 % – 15 %
- Frequency: 50 Hz
- Standby: 0,5 W
- Detection angle: 360°
- Detection area: crosswise: max. 16 m,  
frontal: max. 5 m
- Installation height: 2 – 4 m
- Exit-On function: yes
- Brightness setting range: 5 – 1000/∞ lux
- Switch-off delay: 5 s – 20 min
- Permissible ambient temperature: –25 °C to +45 °C
- Protection class: II
- Protection rating: IP 55 in accordance with  
EN 60529
- Switching capacity: 10 A ( $\cos \varphi = 1$ )  
6 A ( $\cos \varphi = 0.6$ )  
3 AX ( $\cos \varphi = 0.3$ )
- Min. switching capacity: 10 mA
- Switching contact:  $\mu$ -Contact 230 V AC
- LED lamps <2 W 25 W
- LED lamps >2 W <8 W 90 W

- LED lamps >8 W            100 W
- Incandescent and halogen lamp load:    2300 W
- Low-voltage halogen lamps:            2300 VA
- Fluorescent lamps (low-loss series devices):
  - uncorrected:                    400 VA
  - Series corrected:                400 VA
  - Parallel-corrected:            400 VA (42  $\mu$ F)
- Fluorescent lamps (electronic ballast): 600 W
- Compact fluorescent tubes  
(electronic ballast):                    150 W

### **Service address**

Theben AG  
 Hohenbergstr. 32  
 72401 Haigerloch  
 GERMANY  
 Phone +49 7474 692-0  
 Fax +49 7474 692-150

### **Hotline**

Phone +49 7474 692-369  
 Fax +49 7474 692-207  
 hotline@theben.de

**Addresses, telephone numbers etc.**  
**[www.theben.de](http://www.theben.de)**