

H091-05**TECHNICAL SHEET**

9.2013

ELBOW 90°**PRODUCER: „HUBIX”****CHARACTERISTICS**

Made of white PVC. Polyamide threaded end for tube extensions, nozzles and brushes connection.
Weight: 105g

APPLICATION

Live working up to 36kV a.c. The elbows are the part of the cleaning set. They are used to dry cleaning method of the electrical devices.

STORAGE AND MAINTENANCE

The elbows should be properly stored to minimize the risk of damage due to storage or transportation. The elbows should be stored generally separated from other equipment to avoid mechanical damage. The elbows should be prevented from excessive heat and sun light. The elbows should be cleaning after each use. Dirty elbows should be cleaned by wiping the exterior surface of a dry cloth. With strong dirty exterior surfaces clean with a cloth dampened with a soft detergent and dry thoroughly. It is recommended to wipe the outer! elbows surface after drying, silicone tissue (supplied with the set).

CHECK AND PERIODIC INSPECTION

Before use, each part of equipment should be visually inspected by the user. Periodic inspection carried out in accordance with instructions for use. Periodic inspection includes a visual inspection and test of protection against bridging.

The visual inspection includes checking:
the lack of visible damage the surface of the elbows;
the clarity and completeness of the labeling;
the validity of the periodic inspection;

Protection against bridging test consists of checking element in the measurement system of the test voltage of $1.2 U_n$ (maximum rated voltage pieces of equipment).
 The test is passed when no spark-over or electric discharges are observed.

Items of equipment damaged, badly worn or soiled not be used in the live working. If moisture should be thoroughly dried before use.

FREQUENCY TESTS

For check and periodic inspection to be carried out in according to table.

	CHECK	PERIODIC INSPECITON
Who	Manager of team	Laboratory
When	Before use	Once a year
How	Visually	Visually, Protection against bridging

PERIODIC INSPECION CARD

date	supervisor	result	signature

EXAMPLE OF USE



H091-05-S**TECHNICAL SHEET**

9.2013

MOVABLE ELBOW 90°**PRODUCER: „HUBIX“****CHARACTERISTICS**

Made of white PVC. Polyamide threaded end for tube extensions, nozzles and brushes connection.
Weight: 190g

APPLICATION

Live working up to 36kV a.c. The elbows are the part of the cleaning set. They are used to dry cleaning method of the electrical devices.

STORAGE AND MAINTENANCE

The elbows should be properly stored to minimize the risk of damage due to storage or transportation. The elbows should be stored generally separated from other equipment to avoid mechanical damage. The elbows should be prevented from excessive heat and sun light. The elbows should be cleaning after each use. Dirty elbows should be cleaned by wiping the exterior surface of a dry cloth. With strong dirty exterior surfaces clean with a cloth dampened with a soft detergent and dry thoroughly. It is recommended to wipe the outer! elbows surface after drying, silicone tissue (supplied with the set).

CHECK AND PERIODIC INSPECTION

Before use, each part of equipment should be visually inspected by the user. Periodic inspection carried out in accordance with instructions for use. Periodic inspection includes a visual inspection and test of protection against bridging.

The visual inspection includes checking:
the lack of visible damage the surface of the elbows;
the clarity and completeness of the labeling;
the validity of the periodic inspection;

Protection against bridging test consists of checking element in the measurement system of the test voltage of $1.2 U_n$ (maximum rated voltage pieces of equipment).
 The test is passed when no spark-over or electric discharges are observed.

Items of equipment damaged, badly worn or soiled not be used in the live working. If moisture should be thoroughly dried before use.

FREQUENCY TESTS

For check and periodic inspection to be carried out in according to table.

	CHECK	PERIODIC INSPECITON
Who	Manager of team	Laboratory
When	Before use	Once a year
How	Visually	Visually, Protection against bridging

PERIODIC INSPECION CARD

date	supervisor	result	signature

EXAMPLE OF USE



H091-06**TECHNICAL SHEET**

9.2013

ELBOW 135°**PRODUCER: „HUBIX“****CHARACTERISTICS**

Made of white PVC. Polyamide threaded end for tube extensions, nozzles and brushes connection.
Weight: 100g

APPLICATION

Live working up to 36kV a.c. The elbows are the part of the cleaning set. They are used to dry cleaning method of the electrical devices.

STORAGE AND MAINTENANCE

The elbows should be properly stored to minimize the risk of damage due to storage or transportation. The elbows should be stored generally separated from other equipment to avoid mechanical damage. The elbows should be prevented from excessive heat and sun light. The elbows should be cleaned after each use. Dirty elbows should be cleaned by wiping the exterior surface of a dry cloth. With strong dirty exterior surfaces clean with a cloth dampened with a soft detergent and dry thoroughly. It is recommended to wipe the outer! elbows surface after drying, silicone tissue (supplied with the set).

CHECK AND PERIODIC INSPECTION

Before use, each part of equipment should be visually inspected by the user. Periodic inspection carried out in accordance with instructions for use. Periodic inspection includes a visual inspection and test of protection against bridging.

The visual inspection includes checking:
the lack of visible damage the surface of the elbows;
the clarity and completeness of the labeling;
the validity of the periodic inspection;

Protection against bridging test consists of checking element in the measurement system of the test voltage of $1.2 U_n$ (maximum rated voltage pieces of equipment).
 The test is passed when no spark-over or electric discharges are observed.

Items of equipment damaged, badly worn or soiled not be used in the live working. If moisture should be thoroughly dried before use.

FREQUENCY TESTS

For check and periodic inspection to be carried out in according to table.

	CHECK	PERIODIC INSPECITON
Who	Manager of team	Laboratory
When	Before use	Once a year
How	Visually	Visually, Protection against bridging

PERIODIC INSPECION CARD

date	supervisor	result	signature

EXAMPLE OF USE



CIRCULAR BRUSH**PRODUCER: „HUBIX“**

<i>length</i>	<i>diameter</i>	<i>weight</i>
230mm	120mm	250g

CHARACTERISTICS

Made of polyamide and natural brush. Polyamide threaded end for suction tube, tube extensions and elbows connection.

APPLICATION

Live working up to 36kV a.c. The brushes are the part of the cleaning set. They are used to dry cleaning method of the electrical devices.

STORAGE AND MAINTENANCE

The brushes should be properly stored to minimize the risk of damage due to storage or transportation. The brushes should be stored generally separated from other equipment to avoid mechanical damage. The brushes should be prevented from excessive heat and sun light. The brushes should be cleaned after each use. Use a dry tissue to clean. The bristle of brush should be cleaned by vacuuming or brushed off. When bristle of brush becomes strong soiled use gasoline-based thinner to clean and thoroughly dried.

CHECK AND PERIODIC INSPECTION

Before use, each part of equipment should be visually inspected by the user. Periodic inspection carried out in accordance with instructions for use. Periodic inspection includes a visual inspection and test of protection against bridging.

The visual inspection includes checking:

- the lack of visible damage the surface of the brushes;
- the clarity and completeness of the labeling;
- the validity of the periodic inspection;

Protection against bridging test consists of checking element in the measurement system of the test voltage of $1.2 U_n$ (maximum rated voltage pieces of equipment).
 The test is passed when no spark-over or electric discharges are observed.

Items of equipment damaged, badly worn or soiled not be used in the live working. If moisture should be thoroughly dried before use.

FREQUENCY TESTS

For check and periodic inspection to be carried out in according to table.

	CHECK	PERIODIC INSPECITON
Who	Manager of team	Laboratory
When	Before use	Once a year
How	Visually	Visually, Protection against bridging

PERIODIC INSPECION CARD

date	supervisor	result	signature

EXAMPLE OF USE



FORKED BRUSH**PRODUCER: „HUBIX“**

<i>length</i>	<i>diameter</i>	<i>weight</i>
230mm	2x100mm	250g

CHARACTERISTICS

Made of polyamide and natural brush. Polyamide threaded end for suction tube, tube extensions and elbows connection.

APPLICATION

Live working up to 36kV a.c. The brushes are the part of the cleaning set. They are used to dry cleaning method of the electrical devices.

STORAGE AND MAINTENANCE

The brushes should be properly stored to minimize the risk of damage due to storage or transportation. The brushes should be stored generally separated from other equipment to avoid mechanical damage. The brushes should be prevented from excessive heat and sun light. The brushes should be cleaned after each use. Use a dry tissue to clean. The bristle of brush should be cleaned by vacuuming or brushed off. When bristle of brush becomes strong soiled use gasoline-based thinner to clean and thoroughly dried.

CHECK AND PERIODIC INSPECTION

Before use, each part of equipment should be visually inspected by the user. Periodic inspection carried out in accordance with instructions for use. Periodic inspection includes a visual inspection and test of protection against bridging.

The visual inspection includes checking:

- the lack of visible damage the surface of the brushes;
- the clarity and completeness of the labeling;
- the validity of the periodic inspection;

Protection against bridging test consists of checking element in the measurement system of the test voltage of $1.2 U_n$ (maximum rated voltage pieces of equipment).
 The test is passed when no spark-over or electric discharges are observed.

Items of equipment damaged, badly worn or soiled not be used in the live working. If moisture should be thoroughly dried before use.

FREQUENCY TESTS

For check and periodic inspection to be carried out in according to table.

	CHECK	PERIODIC INSPECITON
Who	Manager of team	Laboratory
When	Before use	Once a year
How	Visually	Visually, Protection against bridging

PERIODIC INSPECION CARD

date	supervisor	result	signature

EXAMPLE OF USE



RECTANGULAR SMALL BRUSH

PRODUCER: „HUBIX"



<i>length</i>	<i>bristle length</i>	<i>weight</i>
140mm	40x60mm	80g

CHARACTERISTICS

Made of polyamide and natural brush. Polyamide threaded end for suction tube, tube extensions and elbows connection.

APPLICATION

Live working up to 36kV a.c. The brushes are the part of the cleaning set. They are used to dry cleaning method of the electrical devices.

STORAGE AND MAINTENANCE

The brushes should be properly stored to minimize the risk of damage due to storage or transportation. The brushes should be stored generally separated from other equipment to avoid mechanical damage. The brushes should be prevented from excessive heat and sun light. The brushes should be cleaned after each use. Use a dry tissue to clean. The bristle of brush should be cleaned by vacuuming or brushed off. When bristle of brush becomes strong soiled use gasoline-based thinner to clean and thoroughly dried.

CHECK AND PERIODIC INSPECTION

Before use, each part of equipment should be visually inspected by the user. Periodic inspection carried out in accordance with instructions for use. Periodic inspection includes a visual inspection and test of protection against bridging.

The visual inspection includes checking:

- the lack of visible damage the surface of the brushes;
- the clarity and completeness of the labeling;
- the validity of the periodic inspection;

Protection against bridging test consists of checking element in the measurement system of the test voltage of 1.2 Un (maximum rated voltage pieces of equipment).
The test is passed when no spark-over or electric discharges are observed.

Items of equipment damaged, badly worn or soiled not be used in the live working. If moisture should be thoroughly dried before use.

FREQUENCY TESTS

For check and periodic inspection to be carried out in according to table.

	CHECK	PERIODIC INSPECITON
Who	Manager of team	Laboratory
When	Before use	Once a year
How	Visually	Visually, Protection against bridging

PERIODIC INSPECION CARD

date	supervisor	result	signature

EXAMPLE OF USE



LONG BRUSH**PRODUCER: „HUBIX“**

<i>length</i>	<i>bristle length</i>	<i>weight</i>
260mm	50x130mm	160g

CHARACTERISTICS

Made of polyamide and natural brush. Polyamide threaded end for suction tube, tube extensions and elbows connection.

APPLICATION

Live working up to 36kV a.c. The brushes are the part of the cleaning set. They are used to dry cleaning method of the electrical devices.

STORAGE AND MAINTENANCE

The brushes should be properly stored to minimize the risk of damage due to storage or transportation. The brushes should be stored generally separated from other equipment to avoid mechanical damage. The brushes should be prevented from excessive heat and sun light. The brushes should be cleaned after each use. Use a dry tissue to clean. The bristle of brush should be cleaned by vacuuming or brushed off. When bristle of brush becomes strong soiled use gasoline-based thinner to clean and thoroughly dried.

CHECK AND PERIODIC INSPECTION

Before use, each part of equipment should be visually inspected by the user. Periodic inspection carried out in accordance with instructions for use. Periodic inspection includes a visual inspection and test of protection against bridging.

The visual inspection includes checking:

- the lack of visible damage the surface of the brushes;
- the clarity and completeness of the labeling;
- the validity of the periodic inspection;

Protection against bridging test consists of checking element in the measurement system of the test voltage of $1.2 U_n$ (maximum rated voltage pieces of equipment).
 The test is passed when no spark-over or electric discharges are observed.

Items of equipment damaged, badly worn or soiled not be used in the live working. If moisture should be thoroughly dried before use.

FREQUENCY TESTS

For check and periodic inspection to be carried out in according to table.

	CHECK	PERIODIC INSPECITON
Who	Manager of team	Laboratory
When	Before use	Once a year
How	Visually	Visually, Protection against bridging

PERIODIC INSPECION CARD

date	supervisor	result	signature

EXAMPLE OF USE



NARROW SUCTION NOZZLE**PRODUCER: „HUBIX”**

<i>length</i>	<i>width</i>	<i>weight</i>
230mm	30mm	75g

CHARACTERISTICS

Made of red polyamide. Polyamide threaded end for suction tube, tube extensions and elbows connection.

APPLICATION

Live working up to 36kV a.c. The nozzles are the part of the cleaning set. They are used to dry cleaning method of the electrical devices.

STORAGE AND MAINTENANCE

The nozzles should be properly stored to minimize the risk of damage due to storage or transportation. The nozzles should be stored generally separated from other equipment to avoid mechanical damage. The nozzles should be prevented from excessive heat and sun light. The nozzles should be cleaned after each use. Use a dry tissue to clean. When nozzle becomes strongly soiled use gasoline-based thinner to clean and thoroughly dried.

CHECK AND PERIODIC INSPECTION

Before use, each part of equipment should be visually inspected by the user. Periodic inspection carried out in accordance with instructions for use. Periodic inspection includes a visual inspection and test of protection against bridging.

The visual inspection includes checking:

- the lack of visible damage the surface of the nozzles;
- the clarity and completeness of the labeling;
- the validity of the periodic inspection;

Protection against bridging test consists of checking element in the measurement system of the test voltage of $1.2 U_n$ (maximum rated voltage pieces of equipment).
 The test is passed when no spark-over or electric discharges are observed.

Items of equipment damaged, badly worn or soiled not be used in the live working. If moisture should be thoroughly dried before use.

FREQUENCY TESTS

For check and periodic inspection to be carried out in according to table.

	CHECK	PERIODIC INSPECITON
Who	Manager of team	Laboratory
When	Before use	Once a year
How	Visually	Visually, Protection against bridging

PERIODIC INSPECION CARD

date	supervisor	result	signature

WIDE SUCTION NOZZLE**PRODUCER: „HUBIX”**

<i>length</i>	<i>width</i>	<i>weight</i>
320mm	40mm	110g

CHARACTERISTICS

Made of red polyamide. Polyamide threaded end for suction tube, tube extensions and elbows connection.

APPLICATION

Live working up to 36kV a.c. The nozzles are the part of the cleaning set. They are used to dry cleaning method of the electrical devices.

STORAGE AND MAINTENANCE

The nozzles should be properly stored to minimize the risk of damage due to storage or transportation. The nozzles should be stored generally separated from other equipment to avoid mechanical damage. The nozzles should be prevented from excessive heat and sun light. The nozzles should be cleaned after each use. Use a dry tissue to clean. When nozzle becomes strongly soiled use gasoline-based thinner to clean and thoroughly dried.

CHECK AND PERIODIC INSPECTION

Before use, each part of equipment should be visually inspected by the user. Periodic inspection carried out in accordance with instructions for use. Periodic inspection includes a visual inspection and test of protection against bridging.

The visual inspection includes checking:

- the lack of visible damage the surface of the nozzles;
- the clarity and completeness of the labeling;
- the validity of the periodic inspection;

Protection against bridging test consists of checking element in the measurement system of the test voltage of $1.2 U_n$ (maximum rated voltage pieces of equipment).
 The test is passed when no spark-over or electric discharges are observed.

Items of equipment damaged, badly worn or soiled not be used in the live working. If moisture should be thoroughly dried before use.

FREQUENCY TESTS

For check and periodic inspection to be carried out in according to table.

	CHECK	PERIODIC INSPECITON
Who	Manager of team	Laboratory
When	Before use	Once a year
How	Visually	Visually, Protection against bridging

PERIODIC INSPECION CARD

date	supervisor	result	signature

EXAMPLE OF USE



WIDE-ANGULAR SUCTION NOZZLE**PRODUCER: „HUBIX”**

<i>length</i>	<i>width</i>	<i>weight</i>
360mm	95mm	160g

CHARACTERISTICS

Made of black polyethylene. Polyamide threaded end for suction tube, tube extensions and elbows connection.

APPLICATION

Live working up to 36kV a.c. The nozzles are the part of the cleaning set. They are used to dry cleaning method of the electrical devices.

STORAGE AND MAINTENANCE

The nozzles should be properly stored to minimize the risk of damage due to storage or transportation. The nozzles should be stored generally separated from other equipment to avoid mechanical damage. The nozzles should be prevented from excessive heat and sun light. The nozzles should be cleaned after each use. Use a dry tissue to clean. When nozzle becomes strongly soiled use gasoline-based thinner to clean and thoroughly dried.

CHECK AND PERIODIC INSPECTION

Before use, each part of equipment should be visually inspected by the user. Periodic inspection carried out in accordance with instructions for use. Periodic inspection includes a visual inspection and test of protection against bridging.

The visual inspection includes checking:

- the lack of visible damage the surface of the nozzles;
- the clarity and completeness of the labeling;
- the validity of the periodic inspection;

Protection against bridging test consists of checking element in the measurement system of the test voltage of 1.2 Un (maximum rated voltage pieces of equipment).
 The test is passed when no spark-over or electric discharges are observed.

Items of equipment damaged, badly worn or soiled not be used in the live working. If moisture should be thoroughly dried before use.

FREQUENCY TESTS

For check and periodic inspection to be carried out in according to table.

	CHECK	PERIODIC INSPECITON
Who	Manager of team	Laboratory
When	Before use	Once a year
How	Visually	Visually, Protection against bridging

PERIODIC INSPECION CARD

date	supervisor	result	signature

EXAMPLE OF USE



WIDE-ANGULAR SUCTION BRUSH

PRODUCER: „HUBIX”



<i>length</i>	<i>bristle width</i>	<i>weight</i>
250mm	160mm	370g

CHARACTERISTICS

Made of black polypropylene. The bristle is moved by intake air. Polyamide threaded end for suction tube, tube extensions and elbows connection.

APPLICATION

Live working up to 36kV a.c. The brushes are the part of the cleaning set. They are used to dry cleaning method of the insulators.

STORAGE AND MAINTENANCE

The brushes should be properly stored to minimize the risk of damage due to storage or transportation. The brushes should be stored generally separated from other equipment to avoid mechanical damage. The brushes should be prevented from excessive heat and sun light. The brushes should be cleaned after each use. Use a dry tissue to clean. The bristle of brush should be cleaned by vacuuming or brushed off. When bristle of brush becomes strong soiled use gasoline-based thinner to clean and thoroughly dried.

CHECK AND PERIODIC INSPECTION

Before use, each part of equipment should be visually inspected by the user. Periodic inspection carried out in accordance with instructions for use. Periodic inspection includes a visual inspection and test of protection against bridging.

The visual inspection includes checking:

- the lack of visible damage the surface of the brushes;
- the clarity and completeness of the labeling;
- the validity of the periodic inspection;

Protection against bridging test consists of checking element in the measurement system of the test voltage of $1.2 U_n$ (maximum rated voltage pieces of equipment).
 The test is passed when no spark-over or electric discharges are observed.

Items of equipment damaged, badly worn or soiled not be used in the live working. If moisture should be thoroughly dried before use.

FREQUENCY TESTS

For check and periodic inspection to be carried out in according to table.

	CHECK	PERIODIC INSPECITON
Who	Manager of team	Laboratory
When	Before use	Once a year
How	Visually	Visually, Protection against bridging

PERIODIC INSPECION CARD

date	supervisor	result	signature

EXAMPLE OF USE



WIDE SUCTION BRUSH**PRODUCER: „HUBIX”**

<i>dimensions</i>	<i>weight</i>
50x360mm	300g

CHARACTERISTICS

Made of black polyethylene., fl Polyamide threaded end for suction tube, tube extensions and elbows connection.

APPLICATION

Live working up to 36kV a.c. The suction brushes are the part of the cleaning set. They are used to dry cleaning method of the electrical devices, walls and floors.

STORAGE AND MAINTENANCE

The suction brushes should be properly stored to minimize the risk of damage due to storage or transportation. The suction brushes should be stored generally separated from other equipment to avoid mechanical damage. The suction brushes should be prevented from excessive heat and sun light. The brushes should be cleaning after each use. Use a dry tissue to clean. When suction brush becomes strong soiled use gasoline-based thinner to clean and thoroughly dried.

CHECK AND PERIODIC INSPECTION

Before use, each part of equipment should be visually inspected by the user. Periodic inspection carried out in accordance with instructions for use. Periodic inspection includes a visual inspection and test of protection against bridging.

The visual inspection includes checking:

- the lack of visible damage the surface of the suction brushes;
- the clarity and completeness of the labeling;
- the validity of the periodic inspection;

Protection against bridging test consists of checking element in the measurement system of the test voltage of $1.2 U_n$ (maximum rated voltage pieces of equipment).
 The test is passed when no spark-over or electric discharges are observed.

Items of equipment damaged, badly worn or soiled not be used in the live working. If moisture should be thoroughly dried before use.

FREQUENCY TESTS

For check and periodic inspection to be carried out in according to table.

	CHECK	PERIODIC INSPECITON
Who	Manager of team	Laboratory
When	Before use	Once a year
How	Visually	Visually, Protection against bridging

PERIODIC INSPECION CARD

date	supervisor	result	signature

EXAMPLE OF USE



SET CLEANING BRUSH**PRODUCER: „HUBIX“**

<i>length</i>	<i>weight</i>
1300mm	240g

**CHARACTERISTICS**

Made of fibreglass rod, polyamide and natural bristle.

APPLICATION

The brush is used only to clean the inside surface of the suction tube and extensions. Do not use for live working.

STORAGE AND MAINTENANCE

The brushes should be properly stored to minimize the risk of damage due to storage or transportation. The brushes should be stored generally separated from other equipment to avoid mechanical damage. The brushes should be prevented from excessive heat and sun light. The brushes should be cleaned after each use. Use a dry tissue to clean. The bristle of brush should be cleaned by vacuuming or brushed off. When bristle of brush becomes strong soiled use gasoline-based thinner to clean and thoroughly dried.

CHECK AND PERIODIC INSPECTION

Before use, each part of equipment should be visually inspected by the user. Periodic inspection carried out in accordance with instructions for use. Periodic inspection includes a visual inspection

The visual inspection includes checking:

the lack of visible damage the brushes;.

Items of equipment damaged, badly worn or soiled not be used in the live working. If moisture should be thoroughly dried before use.

FREQUENCY TESTS

For check and periodic inspection to be carried out in according to table.

	CHECK	PERIODIC INSPECITON
Who	Manager of team	Laboratory
When	Before use	Once a year
How	Visually	Visually

PERIODIC INSPECION CARD

date	supervisor	result	signature

EXAMPLE OF USE



TURBO BRUSH STANDARD**PRODUCER: „HUBIX”**

<i>length</i>	<i>width</i>	<i>weight</i>
220mm	160mm	350g

**CHARACTERISTICS**

Made of black polypropylene. The bristle is moved by intake air. Polyamide threaded end for suction tube, tube extensions and elbows connection.

APPLICATION

Live working up to 36kV a.c. The brushes are the part of the cleaning set. They are used to dry cleaning method of the electrical devices, floors and walls.

STORAGE AND MAINTENANCE

The brushes should be properly stored to minimize the risk of damage due to storage or transportation. The brushes should be stored generally separated from other equipment to avoid mechanical damage. The brushes should be prevented from excessive heat and sun light. The brushes should be cleaned after each use. Use a dry tissue to clean. The bristle of brush should be cleaned by vacuuming or brushed off. When bristle of brush becomes strong soiled use gasoline-based thinner to clean and thoroughly dried.

CHECK AND PERIODIC INSPECTION

Before use, each part of equipment should be visually inspected by the user. Periodic inspection carried out in accordance with instructions for use. Periodic inspection includes a visual inspection and test of protection against bridging.

The visual inspection includes checking:

- the lack of visible damage the surface of the brushes;
- the clarity and completeness of the labeling;

the validity of the periodic inspection;

Protection against bridging test consists of checking element in the measurement system of the test voltage of $1.2 U_n$ (maximum rated voltage pieces of equipment).

The test is passed when no spark-over or electric discharges are observed.

Items of equipment damaged, badly worn or soiled not be used in the live working. If moisture should be thoroughly dried before use.

FREQUENCY TESTS

For check and periodic inspection to be carried out in according to table.

	CHECK	PERIODIC INSPECITON
Who	Manager of team	Laboratory
When	Before use	Once a year
How	Visually	Visually, Protection against bridging

PERIODIC INSPECION CARD

date	supervisor	result	signature

EXAMPLE OF USE



CONICAL NIPPLE**PRODUCER: „HUBIX”**

<i>length</i>	<i>int. diameter</i>	<i>weight</i>
95mm	45mm	55g

CHARACTERISTICS

Made of polyamide, allows to connect a vacuum cleaner suction hose on side and nozzles, elbows, or brushes on the other.

APPLICATION

To be used up to 1000V only. The conical nipple is used for direct connection of the cleaning elements to suction hose

STORAGE AND MAINTENANCE

The conical nipple should be properly stored to minimize the risk of damage due to storage or transportation. The conical nipple should be stored generally separated from other equipment to avoid mechanical damage. The conical nipple should be prevented from excessive heat and sun light. The conical nipple should be cleaning after each use. Use a dry tissue to clean. When conical nipple becomes strong soiled use gasoline-based thinner to clean and thoroughly dried. It is recommended to wipe the outer! conical nipple surface after drying, silicone tissue (supplied with the set).

CHECK AND PERIODIC INSPECTION

Before use, each part of equipment should be visually inspected by the user. Periodic inspection carried out in accordance with instructions for use. Periodic inspection includes a visual inspection.

The visual inspection includes checking:

- the lack of visible damage the surface of the conical nipple;
- the clarity and completeness of the labeling;

Items of equipment damaged, badly worn or soiled not be used in the live working. If moisture should be thoroughly dried before use.

FREQUENCY TESTS

For check and periodic inspection to be carried out in according to table.

	CHECK	PERIODIC INSPECITON
Who	Manager of team	Laboratory
When	Before use	Once a year
How	Visually	Visually

PERIODIC INSPECION CARD

date	supervisor	result	signature

INSULATING MIRROR**PRODUCER: „HUBIX“**

<i>length</i>	<i>diameter</i>	<i>weight</i>
130mm	40mm	45g

CHARACTERISTICS

Made of polyamide. To be used with tubes and elbows. Mirror can be set at different direction.

APPLICATION

Live working up to 36kV a.c. Mirror is used to assess the state of dirt invisible from the user the cleaned devices parts and checking that the electrical devices or structural elements there are no loose objects (cables, tools or other conductive elements left behind after maintenance) and that could cause a short circuit while performing live working.

STORAGE AND MAINTENANCE

The mirror should be properly stored to minimize the risk of damage due to storage or transportation. The mirror should be stored generally separated from other equipment to avoid mechanical damage. The mirror should be prevented from excessive heat and sun light. The mirror should be cleaning after each use. Use a dry tissue to clean. When the mirror becomes strong soiled use gasoline-based thinner to clean and thoroughly dried.

CHECK AND PERIODIC INSPECTION

Before use, each part of equipment should be visually inspected by the user. Periodic inspection carried out in accordance with instructions for use. Periodic inspection includes a visual inspection and test of protection against bridging.

The visual inspection includes checking:

- the lack of visible damage the surface of the mirror;
- the clarity and completeness of the labeling;
- the validity of the periodic inspection;

Protection against bridging test consists of checking element in the measurement system of the test voltage of $1.2 U_n$ (maximum rated voltage pieces of equipment).
 The test is passed when no spark-over or electric discharges are observed.

Items of equipment damaged, badly worn or soiled not be used in the live working. If moisture should be thoroughly dried before use.

FREQUENCY TESTS

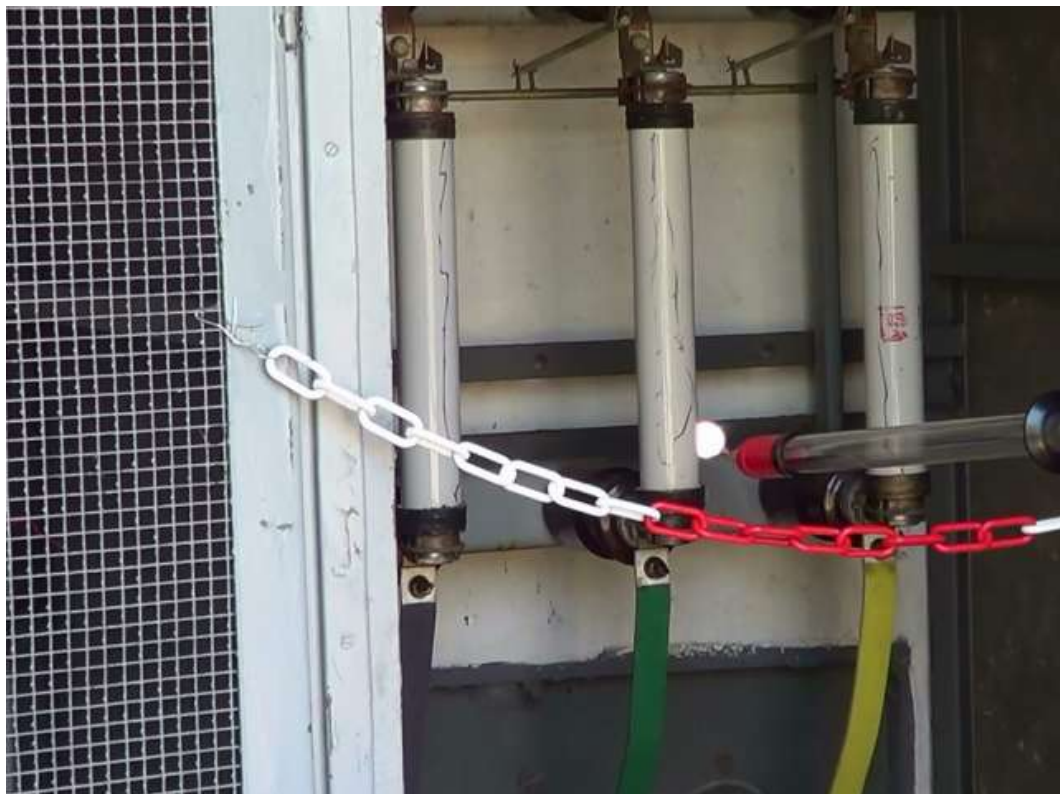
For check and periodic inspection to be carried out in according to table.

	CHECK	PERIODIC INSPECITON
Who	Manager of team	Laboratory
When	Before use	Once a year
How	Visually	Visually, Protection against bridging

PERIODIC INSPECION CARD

date	supervisor	result	signature

EXAMPLE OF USE



THE VACUUM CLEANER with HOSE

DISTRIBUTOR: „HUBIX“

**CHARACTERISTICS**

The vacuum cleaner housing is made of a durable material damage. Power supply 230V/50Hz, power input 2750W, vacuum 235mbar, air flow 2x56 l/s, container capacity 65l, noise level 74dB, length of hose 4m.

Weight: 19kg

Dimension: 600x480x920mm

APPLICATION

The vacuum cleaner is a part of equipment for use in live working up to 36kV dry method..

STORAGE AND MAINTENANCE

The vacuum cleaner should be properly stored to minimize the risk of damage due to storage or transportation. The vacuum cleaner should be prevented from excessive heat and sun light. Use a dry cloth for cleaning. With heavy soiling use a mild detergent. Do not use solvents.

CHECK AND PERIODIC INSPECTION

Before use, the vacuum cleaner and hose should be visually inspected by the user. Periodic inspection carried out in accordance with instructions for use. Periodic inspection includes checking:

- the visual inspection; (especially the insulation of the power cable and hose);
- the idling checking;
- the housing condition (no cracks or other visible damage).

FREQUENCY TESTS

For check and periodic inspection to be carried out in according to table.

	CHECK	PERIODIC INSPECITON
Who	Manager of team	Laboratory
When	Before use	Once a year
How	Visually	accordance with the instruction for use

PERIODIC INSPECION CARD

date	date	date	date
