

## DESCRIPTION

The Dynafor Pro is designed and manufactured by Tractel®. The Dynafor Pro is a versatile and robust wireless digital dynamometer, used in various weighing and force measurement applications.

Based on the principle of strain gauge extension measurement, the sensor generates an electrical signal which is processed and analyzed by a built-in microprocessor, which transmits the information to a wireless accessory.

Equipped with radio 2.4 GHz (RF) and Bluetooth (BLE) chipsets, the Dynafor Pro provides a wireless range of:

- 400 m to Tractel® Dynafor HHD, large displays AL63/128 and software accessories
- 30 m to any smartdevice equipped with our free Dynafor app on iOS or Android

Compatible with standard bow shackles, the Dynafor Pro ensures a perfect implementation in your applications.

## APPLICATIONS

- Overhead Weighing
- Force measurement testing
- Water Bag Load Testing
- Towing applications
- Safety and lifting applications
- Heavylift Projects
- Research & Development Projects
- Load Monitoring on lifting equipments

  
From 1t to 250t

  
RF up to 400m

  
BLE up to 30m

  
0.2% accuracy

  
Powered 3 x AA

  
Water resistant



## ACCESSORIES

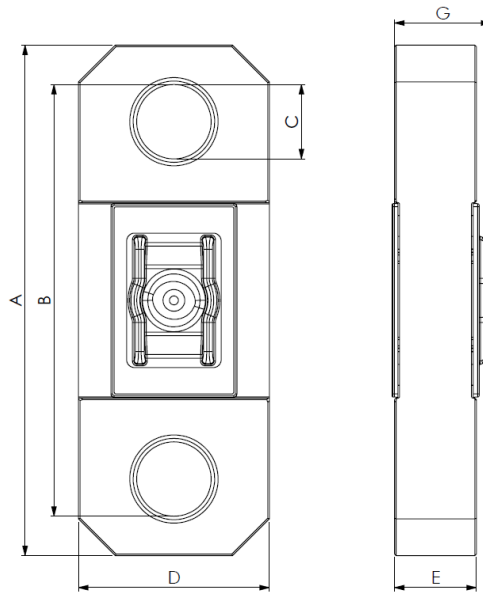
The Dynafor Pro offers a large array of wireless accessories and software:

- Dynafor HHD for a remote display with extended functionalities
- Wireless Dynafor AL63/128 for a high visibility display
- Dynasoft Download & Overload to unload data saved into the HHD
- Dynasoft Monitoring, in use with HHD for real-time monitoring
- Dynafor app available on any Android and iOS device
- Dynafor DMU for threshold management
- Standard bow shackle and swivel hooks



## APPLICABLE STANDARDS

Machinery	:	2006/42/CE			
Radio	:	RED 2014/53/UE	/ EN300440 V2.1.1	/ EN300328 V2.2.2	/ ETSI 203367 V1.1.0
Health	:	EN62479 (2010)			
EMC	:	EN61326-1 (2013)	/ EN301 489- 1 & 17 Part 1 V2.2.3 and Part 17 V3.1.1		
Electrical safety	:	IEC/EN61010-1 (Amd 1 Ed 3)			
UL & CSA Approval	:	FCC part 15	/ RSS-GEN & RSS-210	/ CES-003	

**TECHNICAL CHARACTERISTICS**


MODEL		Pro 1t	Pro 3,2t	Pro 6,5t	Pro 15t	Pro 25t	Pro 50t	Pro 100t	Pro 250t
Purchasing code		293369	293379	293389	293399	293409	293419	293429	293439
Maximum capacity WLL	t	1	3,2	6,5	15	25	50	100	250
Minimum load		10 % of WLL							
Test load	t	1,5	4,8	9,75	22,5	37,5	75	150	375
Safety coefficient		Minimum 4							
Precision	%	0,2% at 21 °C full scale							
	kg	2	6,4	13	30	50	100	200	500
Resolution	kg	0,2	0,5	1	5	10	20	50	100
Maximum display		110% of WLL							
Conversion factor		1 kg = 0,98083 daN = 2,20462 lbs							
Autonomy		From 300 to 1000h depending on usage							
Batteries		3 x AA							
Weight	kg	0,70	0,86	1,60	3,66	5,33	11,45	27,48	97,98
RF Technology		2,4 GHz proprietary, range up to 400 m in open field							
Bluetooth Technology		BLE 4.0 range up to 30 m in open field							
Operating temperature		-20 °C to +50 °C							
Sample rate		4 Hz, up to 32 Hz in "Peak Hold Mode"							
IP Protection		I.P 64 (I.P 67 in option)							
Sensor material		Aluminium				HR Aluminium			
Dimensions	A	216	216	248	319	357	446	559	797
	B	192,8	193,8	214,1	269,8	301,6	371,2	454,2	609,1
	C	21,5	21,5	28,8	46,5	57,4	78,8	107,6	162,1
	D	79	92	113	119	132	152	196	329
	E	23	23	32	51	61	90	129	180
	G	39	39	39	62	65	91	133,5	Unrelevant

**CODES**

Code	Description	EAN Code
293369	Dynafor Pro 1T	3600232933694
293389	Dynafor Pro 6,5T	3600232933892
293379	Dynafor Pro 3,2T	3600232933793
293399	Dynafor Pro 15T	3600232933991
293409	Dynafor Pro 25T	3600232934097
293419	Dynafor Pro 50T	3600232934196
293429	Dynafor Pro 100T	3600232934295
293439	Dynafor Pro 250T	3600232934394